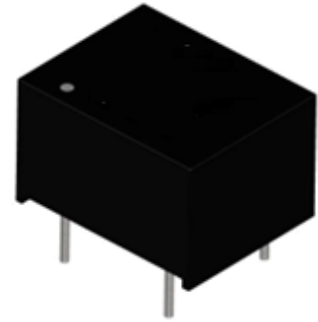


Features

- 1.25 Watts output power
- 1:1 input voltage range
- 1KVdc/2KVdc/3KVdc isolation
- -40°C to +85°C Operating Temperature
- DIP8 Package
- EN 60950-1 safety
- EMC-EN55032/55024
- RoHS compliant

Application

- Input voltage range from 3.3V to 24V
- Industry control application
- Tele-communication application

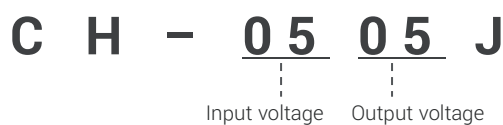


Selection Guide

Part number	Input voltage	Output voltage	Output current @ full load	Efficiency (typ.)	Capacitive load (max.)
CH-3.33.3J	3.3V	3.3V	379mA	75%	1000µF
CH-3.305J		5V	250mA	78%	1000µF
CH-3.309J		9V	139mA	81%	470µF
CH-3.312J		12V	105mA	81%	220µF
CH-3.315J		15V	84mA	82%	220µF
CH-053.3J	5V	3.3V	379mA	73%	1000µF
CH-0505J		5V	250mA	68%	1000µF
CH-0509J		9V	139mA	76%	470µF
CH-0512J		12V	105mA	78%	220µF
CH-0515J		15V	84mA	79%	220µF
CH-123.3J	12V	3.3V	379mA	77%	1000µF
CH-1205J		5V	250mA	69%	1000µF
CH-1209J		9V	139mA	76%	470µF
CH-1212J		12V	105mA	78%	220µF
CH-1215J		15V	84mA	80%	220µF
CH-243.3J	24V	3.3V	379mA	77%	1000µF
CH-2405J		5V	250mA	68%	1000µF
CH-2409J		9V	139mA	77%	470µF
CH-2412J		12V	105mA	80%	220µF
CH-2415J		15V	84mA	82%	220µF

1. Add "H" after P/N for isolation 2 KVdc, add "H3" after P/N for isolation 3KVdc.
2. Add "P" after P/N for short circuit protection.

Part Number



CTC is the professional and one among world's leading manufacturers of DC-DC/ AC-DC converters. The products were used in Computers, Industrial controls, Medical equipment, Transportation, EV, ECO-power, Aero-space application and communication.

Specifications

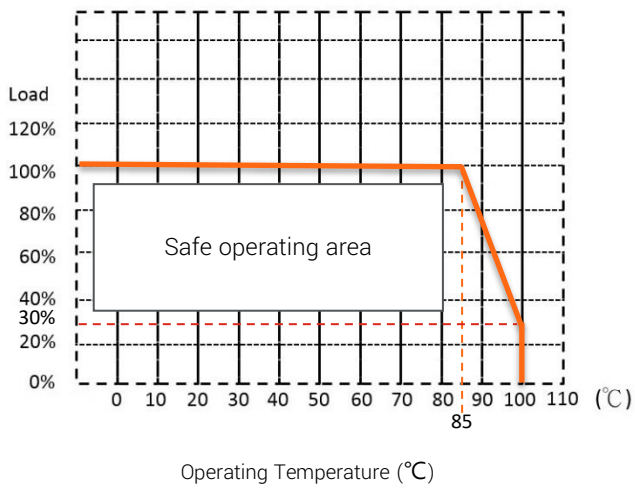
	Parameter	Conditions	Min.	Typ.	Max.	Unit
Input	Input filter			Internal capacitors		
	Input voltage range		-10		+10	%
Output	Voltage accuracy		-5		+5	%
	Minimum load		0			%
	Line regulation	(LL-HL)		1.2% typ.@1% of Vin		
	Load regulation	Vo=3.3/5Vdc		3	15	%
	(10% to 100% Load)	Vo=9~15Vdc		3	10	%
	Ripple& noise	@20MHZ BW(@Nominal Vin)			75	mVp-p
	Operating frequency	100% Load at Nominal Vin			80	KHz
Environment	Operating temperature		-40		85	°C
	Storage temperature		-55		125	°C
	Relative Humidity		5		95	%RH
Function	Isolation voltage	1 sec., Input to Output Add suffix "H" Add suffix "H3"			1000 2000 3000	Vdc Vdc Vdc
	Isolation resistance		10G			Ω
	Isolation capacitance				100	pF
	Short Circuit Protection	Option		continuous		
	MTBF	25°C			16.8*10 ⁶	Hours
	Vibration			MIL-STD-202G		
	Safety Approvals			EN 60950		
Physical	Dimension	(L x W x H)		12.60x10.10x7.62 mm		
	Weight			1.9		g
	Case material			UL94V-0 black plastic		
	Potting material			Epoxy (UL94V-0)		
EMC	EMI	EN 55032		class B		

1. All specifications valid at nominal input voltage, full load and 25°C unless otherwise stated.
2. Test by nominal input and constant resistive load, the efficiency tolerance is ±3%.
3. The product information and specifications are subject to change without prior notice.
4. Max. Capacitive Load is tested at nominal input voltage and full load.
5. "EMC filter suggestion" is as following.

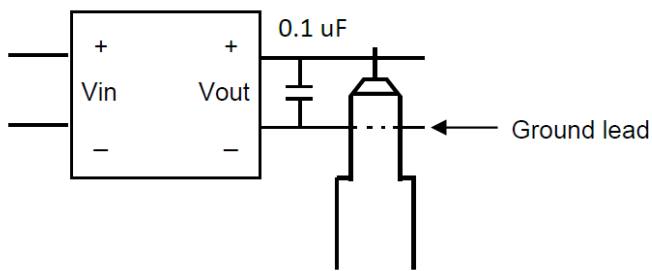
CTC is the professional and one among world's leading manufacturers of DC-DC/ AC-DC converters.

The products were used in Computers, Industrial controls, Medical equipment, Transportation, EV, ECO-power, Aero-space application and communication.

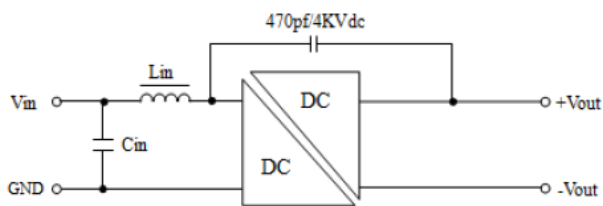
Derating Curve



Ripple & Noise Measure Method



EMI filtering-suggestion for Class B



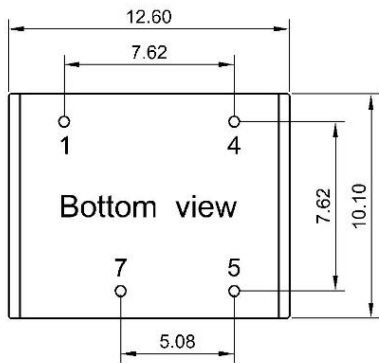
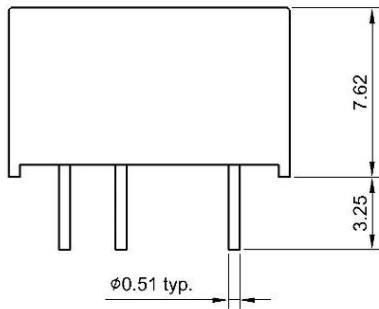
*The External Filter for meet EN55032 Class B.

Product range	Input voltage	Inductance/Capacitance (Lin/Cin)
CH-J	3.3	3.3 μ H/22 μ F
	5	10 μ H/10 μ F
	12	22 μ H/4.7 μ F
	24	47 μ H/2.2 μ F

CTC is the professional and one among world's leading manufacturers of DC-DC/ AC-DC converters.

The products were used in Computers, Industrial controls, Medical equipment, Transportation, EV, ECO-power, Aero-space application and communication.

Mechanical Dimension & Pinning

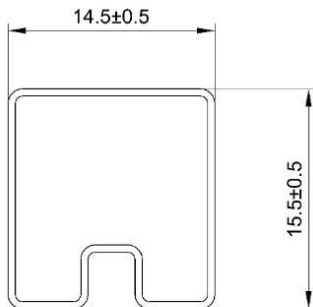


Pin	Single
1	-Vin
4	+Vin
5	+Vout
7	-Vout

Unit: mm

Tolerance: $\pm 0.25\text{mm}$

Package



UNIT:mm
 1 Tube = 39 pcs
 Length:520 \pm 2mm

CTC is the professional and one among world's leading manufacturers of DC-DC/ AC-DC converters.

The products were used in Computers, Industrial controls, Medical equipment, Transportation, EV, ECO-power, Aero-space application and communication.