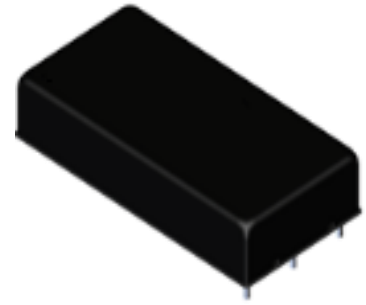


Features

- High efficiency 40W power in compact size 2x1" package
- Wide operating temperature range from -40°C to +105°C
- Six-sided continuous shield
- Continuous Short Circuit Protection
- No minimum load required
- Over load protection/ Over temperature protection/ Over voltage protection
- EN 50155, EN 45545-2 railway standard approvals

Application

- Industry control application
- Telecom/Datacom application
- Save space solution
- Industrial application
- Railway Application

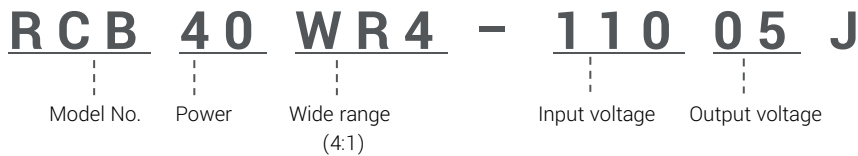


Selection Guide

Part number	Input voltage	Output voltage	Output current @ full load	Input current @ no load	Efficiency ⁽¹⁾ (typ.)	Capacitive load ⁽²⁾ (max.)
RCB40WR4-11005J	40-160VDC Nom. 110VDC	5VDC	8000mA	10 mA	88.5%	20000uF
RCB40WR4-11012J		12VDC	3333mA	10 mA	89.5%	3900uF
RCB40WR4-11024J		24VDC	1667mA	10 mA	89.5%	1300uF
RCB40WR4-11048J		48VDC	833mA	10 mA	88.5%	220uF

1. The efficiency is test by nominal input and max. full load @25°C.
2. The capacitive load is test by minimum input and constant resistive load.

Part Number



Specifications

	Parameter	Conditions	Min.	Typ.	Max.	Unit	
	Input filter			Pi type			
	Input voltage range		40		160	VDC	
Input	Start-up time	100% Load at Nominal Vin			50	mS	
	Start-up voltage	0%~100% load			40	VDC	
	Under voltage lockout	0%~100% load		34		VDC	
	Input surge voltage	1s. Max			200	VDC	
	Remote ON/OFF	DC-DC ON DC-DC OFF		Open or 3V < Vr < 12V Short or 0V < Vr < 1.2V			
	Output	Voltage accuracy	100% Load at Nominal Vin		±1		%
Ripple& noise (20MHZ BW at Vin range 15%~100% load With a 47µF X7R MLCC)		5V output			100	mVp-p	
		12V output			150	mVp-p	
(20MHZ BW at Vin range 15%~100% load With a 10µF X7R MLCC)		24V output			150	mVp-p	
		48V output			200	mVp-p	
Minimum load			0			%	
Line regulation		LL-HL at 100% load		±0.2		%	
Load regulation		0-100% Load		±0.5		%	
Operating frequency	100% Load at Nominal Vin			250	KHz		
Environment	Operating temperature	With derating	-40		105	°C	
	Storage temperature		-55		125	°C	
	Max case temperature				110	°C	
	Temperature coefficient		-0.05		+0.05	%/°C	
	Relative Humidity		5		95	%RH	
	MTBF	25°C			779	KHours	
	Vibration				EN61373		
Function	Isolation voltage	60sec. Input to Output	3			KVDC	
	Isolation resistance	500VDC	1000			MΩ	
	Isolation capacitance			1500		pF	
	Over load protection			175		%	
	Over voltage protection Zener diode clamp	5V output		5.6		8.0	VDC
		12V output		13.4		19.2	VDC
		24V output		26.9		38.4	VDC
		48V output		53.8		76.8	VDC
	Over temperature protection	Tc (Case Temperature)				115	°C
Short Circuit Protection			Continuous, Automatic recovery				

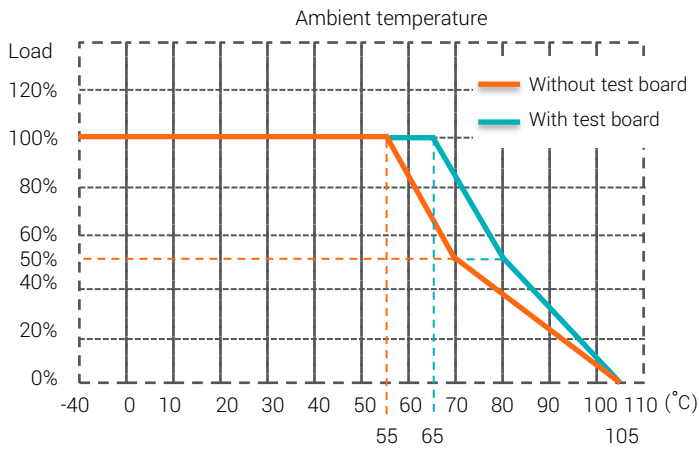
CTC is the professional and one among world's leading manufacturers of DC-DC/ AC-DC converters.

The products were used in Computers, Industrial controls, Medical equipment, Transportation, EV, ECO-power, Aero-space application and communication.

Safety		Approval EN62368-1/ IEC62368-1/ EN50155/ EN55032&35	
Physical	Dimension	(L x W x H)	50.80x25.40x10.50 mm
	Weight		45 g
	Case material		Metal case
	Potting material		Silicon
	Cooling method		Natural convection
EMC	EMI	EN 55032, EN55011	CLASS A/ B with external filter
	ESD	EN61000-4-2, Air ± 8kV Contact ± 6kV	Criteria A
	Radiated immunity	EN61000-4-3, 10 V/m	Criteria A
	Fast transient	EN61000-4-4, ±2kV	Criteria A
	Surge	EN61000-4-5, ±2kV	Criteria A
	Conducted immunity	EN61000-4-6, 10 V/rms	Criteria A
	Magnetic field immunity	EN61000-4-8, 10 A/m	Criteria A

1. All specifications valid at nominal input voltage, full load and 25°C after warm-up time unless otherwise stated.
2. The product information and specifications are subject to change without prior notice.
3. Derating measured with nominal line. Mounted test board (90 x 80 mm and each power pin with 43 x 40 mm, 20z double layer)

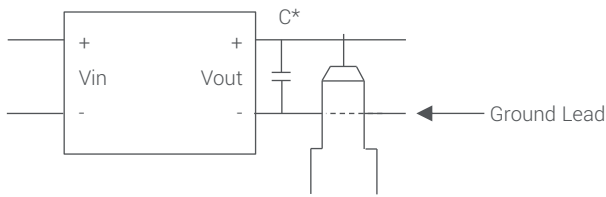
Derating Curve



- The derating curve was measured at nominal Vin in chamber with nature convection.
- The derating curve was measured with nominal line. Mounted test board (600*950mm , 20z)

Ripple & Noise Measure Method

CTC is the professional and one among world's leading manufacturers of DC-DC/ AC-DC converters. The products were used in Computers, Industrial controls, Medical equipment, Transportation, EV, ECO-power, Aero-space application and communication.

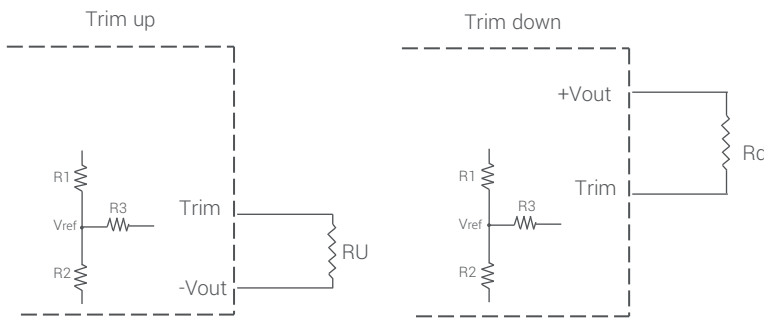


C*

RCB40WR4-11005J and RCB40WR4-11012J measured with 20MHZ BW at Vin range 15%~100% load With a 47μF X7R MLCC.

RCB40WR4-11024J and RCB40WR4-11048J measured with 20MHZ BW at Vin range 15%~100% load With a 10μF X7R MLCC

External Output Voltage Trimming



Formula for trim resistor:

$$\text{UP: } R_U = \frac{aR_2}{R_2 - a} - R_3 \quad a = \frac{V_{ref}}{V'_0 - V_{ref}} \cdot R_1$$

$$\text{DOWN: } R_d = \frac{bR_1}{R_1 - b} - R_3 \quad b = \frac{V'_0 - V_{ref}}{V_{ref}} \cdot R_2$$

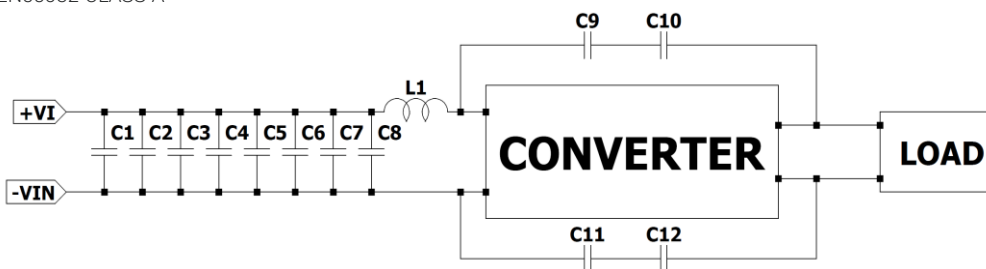
Note:

1. Ru, Rd is mean trim resistor, please check the formula.
2. a & b: user define parameter, no actual meanings.
3. V'_0 is mean trim up/down voltage.
4. Value for R1, R2, R3 and Vref refer to below table.

Vin	Vout	Vref	R1	R2	R3
110V	5V	1.24V	15.47KΩ	5.1KΩ	30.0KΩ
110V	12V	2.50V	38.0KΩ	10.0KΩ	68.0KΩ
110V	24V	2.50V	86.0KΩ	10.0KΩ	76.8KΩ
110V	48V	2.50V	182.0KΩ	10.0KΩ	80.6KΩ

EMI Recommended Circuit

EN55032 CLASS A

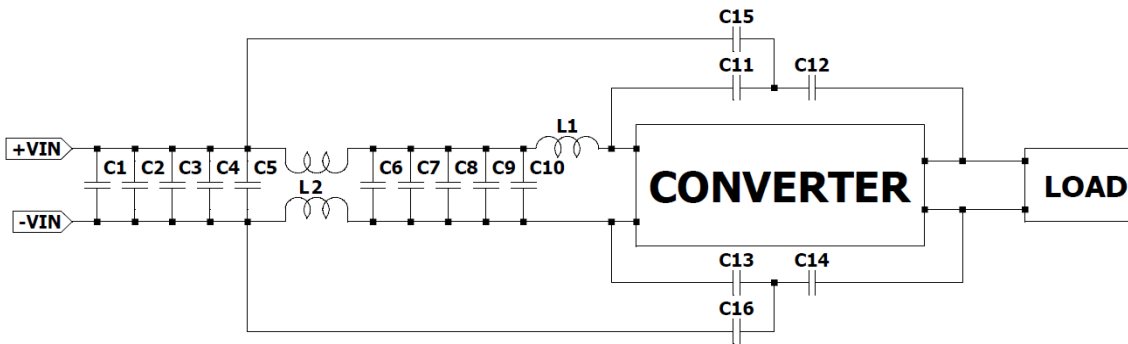


Vin	L1	C1	C2	C3	C4	C5	C6	C7	C8	C9	C10	C11	C12
110V	68uH	0.68uF	0.68uF	0.68uF	0.68uF	0.68uF	0.68uF	0.68uF	0.68uF	4700PF	4700PF	4700PF	4700PF

CTC is the professional and one among world's leading manufacturers of DC-DC/ AC-DC converters.

The products were used in Computers, Industrial controls, Medical equipment, Transportation, EV, ECO-power, Aero-space application and communication.

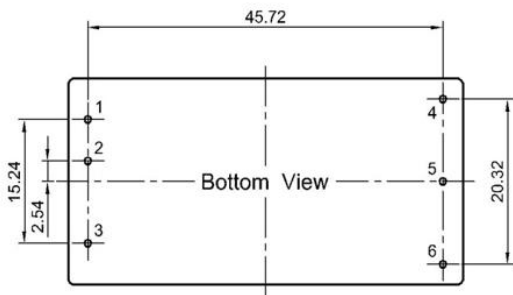
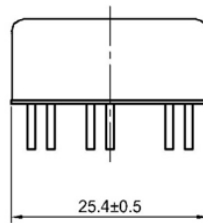
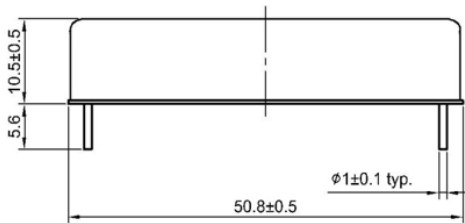
EN55032 CLASS B



Vout	L1	L2	C1	C2	C3	C4	C5	C6	C7
05/ 12V	68uH	2.2mH	0.68uF	0.68uF	0.68uF	0.68uF	0.68uF	0.68uF	0.68uF
24/ 48V	68uH	2.2mH	0.68uF	0.68uF	0.68uF	0.68uF	0.68uF	0.68uF	0.68uF

Vout	C8	C9	C10	C11	C12	C13	C14	C15	C16
05/ 12V	0.68uF	0.68uF	0.68uF	4700PF	4700PF	4700PF	4700PF	47PF	47PF
24/ 48V	0.68uF	0.68uF	0.68uF	4700PF	4700PF	4700PF	4700PF	33PF	33PF

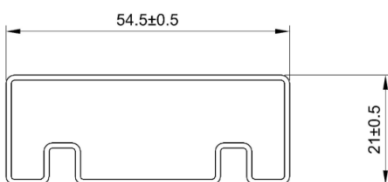
Mechanical Dimension & Pinning



Projection : Third angle projection
 Unit : mm
 Tolerance : ±0.35mm

Pin	Single
1	+Vin
2	-Vin
3	Ctrl
4	+Vout
5	-Vout
6	Trim

Package

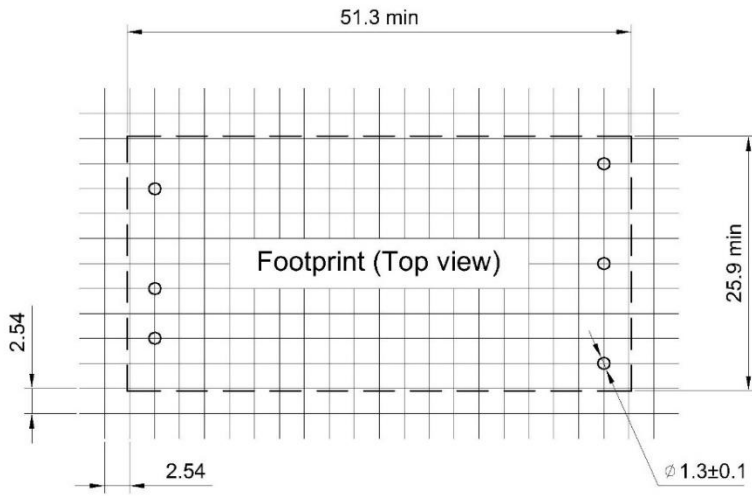


UNIT:mm
 1 Tube = 18 pcs
 Length:520±2mm

CTC is the professional and one among world's leading manufacturers of DC-DC/ AC-DC converters.

The products were used in Computers, Industrial controls, Medical equipment, Transportation, EV, ECO-power, Aero-space application and communication.

Recommend Footprint



CTC is the professional and one among world's leading manufacturers of DC-DC/ AC-DC converters.

The products were used in Computers, Industrial controls, Medical equipment, Transportation, EV, ECO-power, Aero-space application and communication.